



AD **ADVANCED**[™]
DIAGNOSTICS



SMART
Aerial +

SMART Aerial + Cloud Cloning Solution

The Smart Aerial+ from Advanced Diagnostics simplifies and speeds the key cloning process.

Cloning calculations are made using Advanced Diagnostics proprietary servers to guarantee reliability, ensuring that the latest routines are always available and time-consuming software updates are avoided.

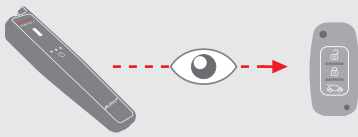
Smart Aerial+ works hand in hand with the MYKEYS Pro app to guide the user through the entire cloning process, providing all the necessary information needed to deliver a perfect duplicate key.



Up to **3X** Faster*

CLONING PROCESS

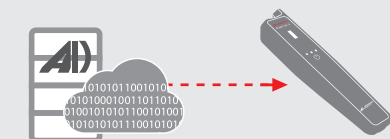
1 Smart Aerial+ reads original key data



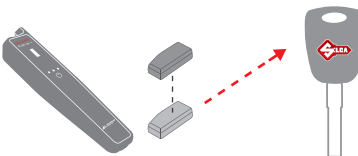
2 Data sent to cloud for calculation



3 Cloning data sent back to Smart Aerial+



4 Smart Aerial+ clones the transponder to create a new key



TECHNICAL DATA

Power supply: 5 VDC mains connection via USB port, 3.7 VDC with battery, 500 mA consumption

Antenna frequency range:

Wi-Fi: 2.4 - 5.0 GHz
LF : 125 - 134 KHz

Dimensions:

Length: 210 mm, Width: 48 mm
Depth: 30 mm

Weight (unpacked): 120 g

CE Certified Made in Italy

MAIN FEATURES



FAST
Cloning process up to **3X** faster*



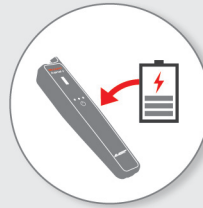
FUTURE PROOF
Updateable, no memory capacity limits



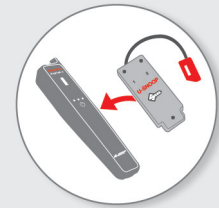
GUIDED PROCEDURES
Step by step using the MYKEYS Pro app



RELIABLE
Superior data processing power using AD proprietary servers



PORTABLE
Integrated, rechargeable battery



EASIER CLONING
with Snoop functions included

* For the ID46 cloning procedure compared to the Silca RW4 Plus.

GTI PRO TRANSPONDER

GTI PRO is the new Silca multi-transponder with a wide technology coverage to reduce inventory.

